

**Cdc37 (phospho Ser13) Polyclonal Antibody**  
**Catalog # AP67683****Specification**

---

**Cdc37 (phospho Ser13) Polyclonal Antibody - Product Information**

Application	WB, IHC-P
Primary Accession	<a href="#">Q16543</a>
Reactivity	Human, Mouse, Rat
Host	Rabbit
Clonality	Polyclonal

**Cdc37 (phospho Ser13) Polyclonal Antibody - Additional Information****Gene ID** 11140**Other Names**

CDC37; CDC37A; Hsp90 co-chaperone Cdc37; Hsp90 chaperone protein kinase-targeting subunit; p50Cdc37

**Dilution**

WB~~Western Blot: 1/500 - 1/2000. Immunohistochemistry: 1/100 - 1/300. ELISA: 1/20000. Not yet tested in other applications.

IHC-P~~N/A

**Format**

Liquid in PBS containing 50% glycerol, 0.5% BSA and 0.09% (W/V) sodium azide.

**Storage Conditions**

-20°C

**Cdc37 (phospho Ser13) Polyclonal Antibody - Protein Information****Name** CDC37**Synonyms** CDC37A**Function**

Co-chaperone that binds to numerous kinases and promotes their interaction with the Hsp90 complex, resulting in stabilization and promotion of their activity (PubMed:<a href="http://www.uniprot.org/citations/8666233" target="\_blank">8666233</a>). Inhibits HSP90AA1 ATPase activity (PubMed:<a href="http://www.uniprot.org/citations/23569206" target="\_blank">23569206</a>).

**Cellular Location**

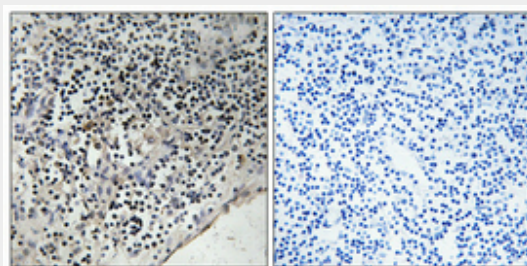
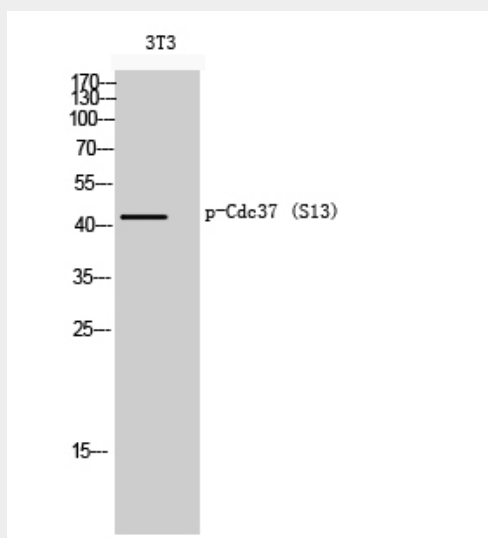
Cytoplasm.

## Cdc37 (phospho Ser13) Polyclonal Antibody - Protocols

Provided below are standard protocols that you may find useful for product applications.

- [Western Blot](#)
- [Blocking Peptides](#)
- [Dot Blot](#)
- [Immunohistochemistry](#)
- [Immunofluorescence](#)
- [Immunoprecipitation](#)
- [Flow Cytometry](#)
- [Cell Culture](#)

## Cdc37 (phospho Ser13) Polyclonal Antibody - Images



## Cdc37 (phospho Ser13) Polyclonal Antibody - Background

Co-chaperone that binds to numerous kinases and promotes their interaction with the Hsp90 complex, resulting in stabilization and promotion of their activity (PubMed:8666233). Inhibits HSP90AA1 ATPase activity (PubMed:23569206).